

PZ25-12000042  
12/17/2025

-----  
MATCHLINE TO SHEET 8, PANEL A  
-----

2	6-6-24	SURVEY UPDATED		MKA
1	2-5-24	FLOOD ZONES ADDED		MKA
NO.	DATE	REMARKS		BY

©COPYRIGHT 2022 BY  
ENGINEUTY GROUP, INC. THIS  
DRAWING IS PROVIDED FOR  
INFORMATIONAL PURPOSES  
ONLY, UNLESS SIGNED AND  
SEALED BY A REGISTERED  
PROFESSIONAL SURVEYOR AND  
MAPPER REPRESENTING  
ENGINEUTY GROUP, INC.

**BROWARD COUNTY BOARD OF COUNTY COMMISSIONERS**  
3201 W COPANS ROAD  
POMPANO BEACH, FLORIDA 33066

BOUNDARY, OF WHICH TWO AND THREE CORNERS ARE

 **A Higher Standard of Excellence**  
**engenuity**  
ENGINEERS • SURVEYORS • GIS MAPPERS **group inc.**

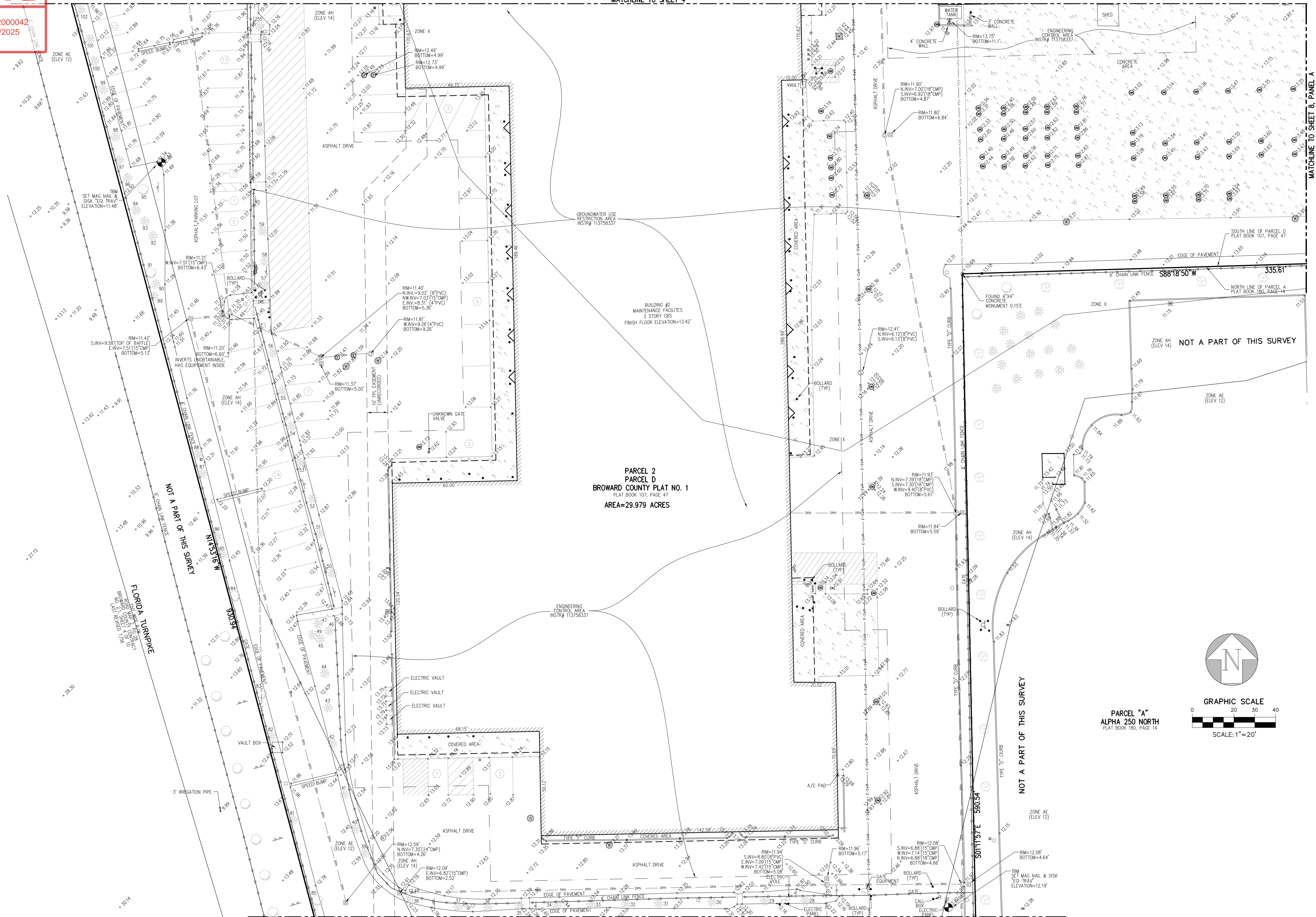
1280 N. CONGRESS AVENUE, SUITE 101,  
WEST PALM BEACH, FLORIDA 33409  
PH (561)655-1151 • FAX (561)832-9390 •

**A Higher Standard of Excellence**  
**ingenium**  
ENGINEERS • SURVEYORS • GIS MAPPERS group

1280 N. CONGRESS AVENUE, SUITE 101,  
WEST PALM BEACH, FLORIDA 33409  
PH (561)655-1151 • FAX (561)832-9390

<div> <div> JOB NO.  21166.01 </div> <div> 3  9 </div> </div>	SCALE	1"=80'
	CAD FILE	21166.01
	SUSK PROJECT	21166.01
	DRAWN	JCM
	CHECKED	CAR

JOB NO.  
21166.01



ELEVATIONS ARE BASED ON NAVD 88